



SCENIC°ECLIPSE

THE WORLD'S FIRST DISCOVERY YACHTS™

# 11 DAY BALTICS TRADEWINDS ROUTE

SCENIC ECLIPSE

DEPARTING 10 JUNE 2020



# Defining a new era of luxury and discovery

## *Spa Sanctuary*<sup>^</sup>

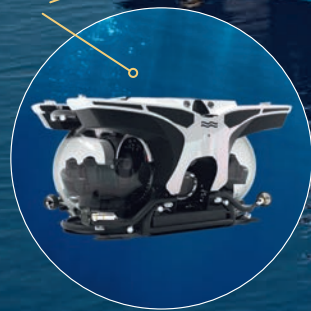
The exclusive Spa Sanctuary boasts 550 square metres of pure indulgence.

## *10 Dining Experiences*

With up to nine dining venues plus 24-hour in-suite dining, you'll be spoilt for choice.

## *Submarine*<sup>^</sup>

Dive below and explore the mysteries of the deep with our submarine.



## *Marina*

The specially designed marina makes boarding our Zodiacs and kayaks a breeze.

## *Zodiacs*

Our all-inclusive fleet of Zodiacs will take you to the heart of the action.





### *Helicopter<sup>^</sup>*

Soar above in our helicopter and discover wonders beyond the horizon.

### *Kayaks*

Discover nature up close in one of our tandem kayaks for all-inclusive, active explorations.

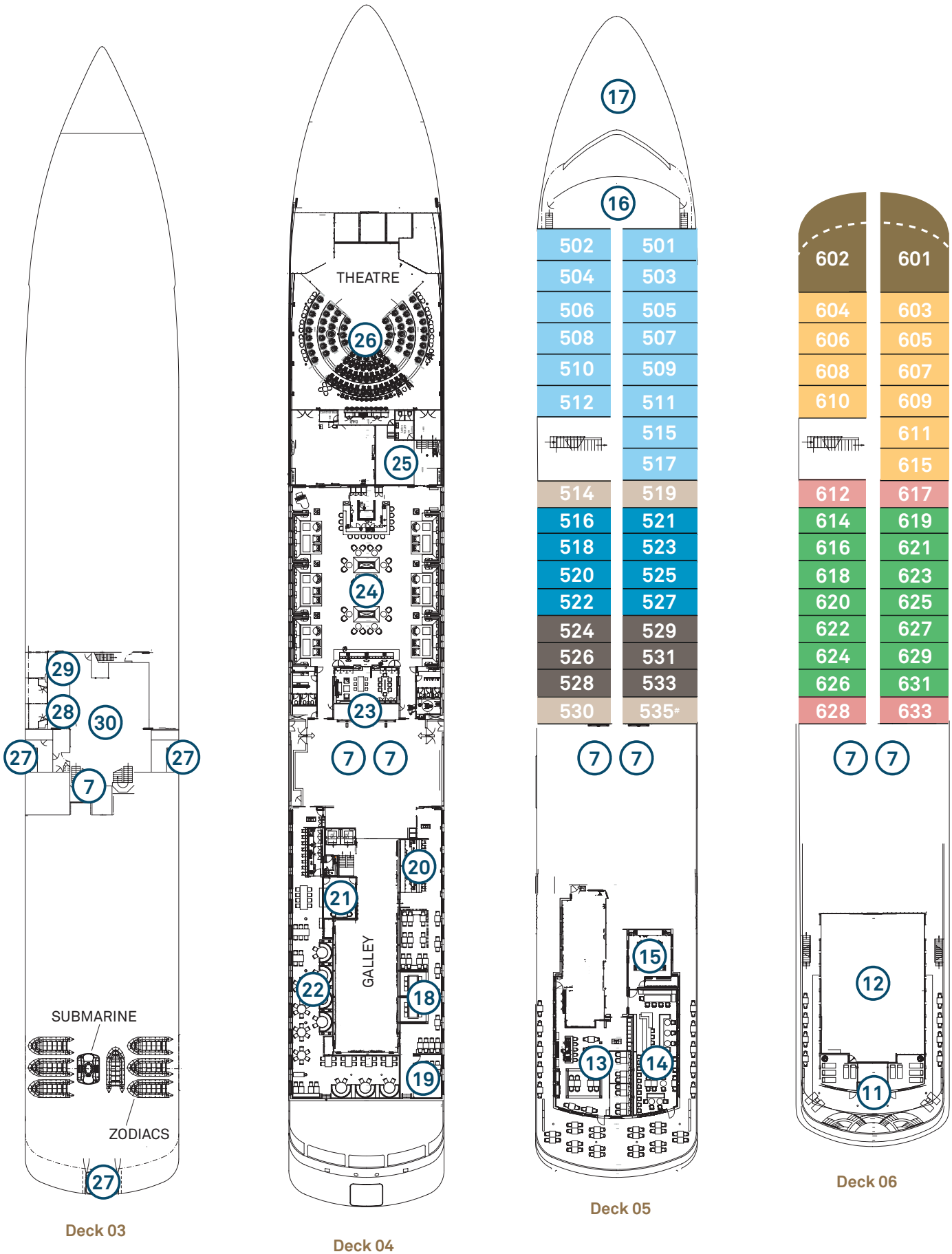
### *Eight Lounges & Bars*

With an abundance of public spaces and no more than 228 guests, there is plenty of room to relax.

### *Highest Ice Class*

The highest Ice Class of any luxury vessel allowing safe navigation in polar waters.

<sup>^</sup>Helicopter, submarine and spa treatments at additional expense  
NB: Some images are artist's impressions.



Deck Plan

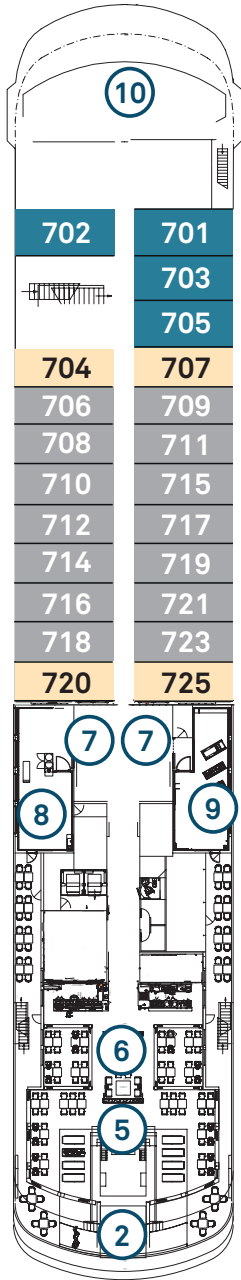
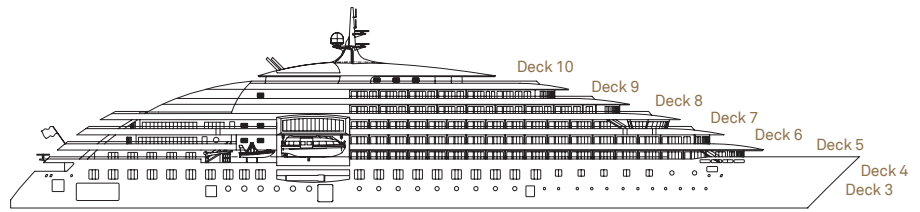
- ① Sun Terrace
- ② Plunge pools
- ③ Helicopter hangars
- ④ Helipad
- ⑤ Indoor & outdoor pools
- ⑥ Yacht Club
- ⑦ Elevator
- ⑧ Yoga & pilates room
- ⑨ Gym & fitness area
- ⑩ Wheelhouse
- ⑪ Spa plunge pools
- ⑫ Spa Sanctuary
- ⑬ Lumière
- ⑭ Azure Bar & Café
- ⑮ Scenic Epicure
- ⑯ The Observatory & Library
- ⑰ Observation Terrace
- ⑱ Koko's
- ⑲ Teppanyaki @ Koko's
- ⑳ Sushi @ Koko's
- ㉑ Chef's Table @ Elements
- ㉒ Elements
- ㉓ Reception & Excursion centre
- ㉔ Lobby Lounge
- ㉕ Boutique
- ㉖ Theatre
- ㉗ Marina entrances
- ㉘ Medical centre
- ㉙ Self-service guest laundry
- ㉚ Climate-controlled mud room

# Scenic Eclipse Discovery Yachts

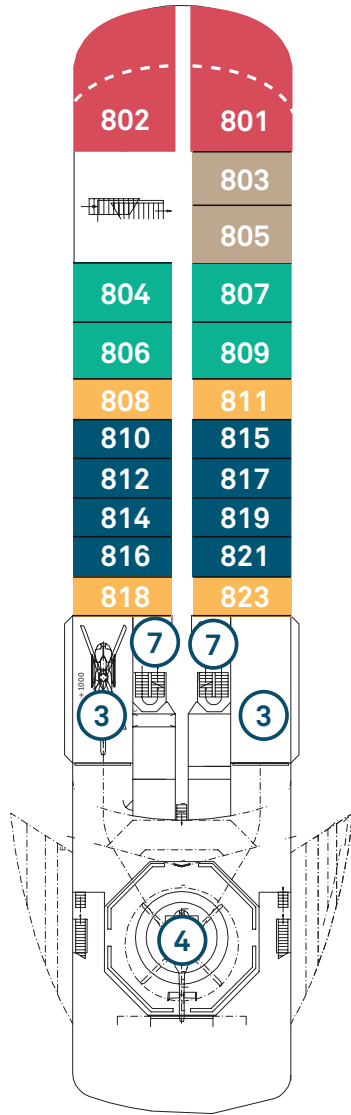
Built 2018/2020 | Suites 114 | Length 168 metres | Gross Tonnage 17,085 | Speed 17 knots

Polar Regions: Passengers 200 | Crew 192

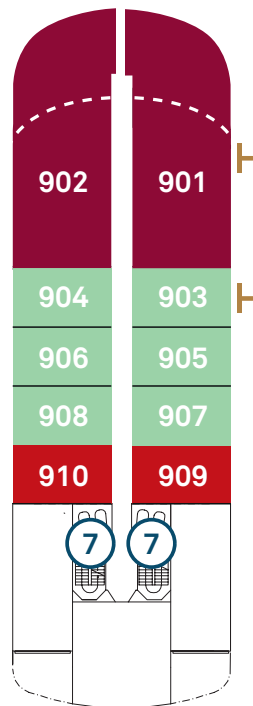
Non-Polar Regions: Passengers 228 | Crew 176



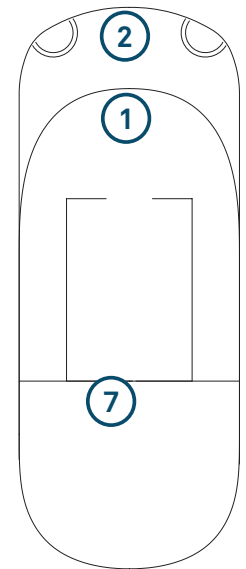
Deck 07



Deck 08



Deck 09



Deck 10

## Suite Categories

Deck 5		Deck 6		Deck 7		Deck 8		Deck 9	
DD	Grand Deluxe Verandah 40m <sup>2</sup>	GP	Grand Panorama 115m <sup>2</sup>	BD	Grand Deluxe Verandah 40m <sup>2</sup>	P	Panorama 110m <sup>2</sup>	OT	^Two-bedroom Penthouse 247m <sup>2</sup>
DB	Deluxe Verandah 34m <sup>2</sup>	CD	Grand Deluxe Verandah 40m <sup>2</sup>	BA	Deluxe Verandah 34m <sup>2</sup>	S	Spa 52m <sup>2</sup>	OP	Owner's Penthouse 195m <sup>2</sup>
DA	Deluxe Verandah 34m <sup>2</sup>	CA	Deluxe Verandah 34m <sup>2</sup>	B	Verandah 32m <sup>2</sup>	AD	Grand Deluxe Verandah 40m <sup>2</sup>	SB	Spa Suite 52m <sup>2</sup>
D	Verandah 32m <sup>2</sup>	C	Verandah 32m <sup>2</sup>			AA	Deluxe Verandah 34m <sup>2</sup>	SA	Spa Suite 50m <sup>2</sup>
						A	Verandah 32m <sup>2</sup>		

^Suites 901 and 903 connect as Two-bedroom Penthouse Suite. \*Suite 535 modified suite.

The deckplan and suite layout images are an indication only and may vary.



# Baltics Tradewinds Route



St. Petersburg, Russia

## Proud Heritage

Uncover the delights of the Baltics during the legendary long summer days of the northern world. Savour the diversity of cultures, cuisines, politics and religions of the region, enjoying a cornucopia of attractions that will enchant all the senses. Over centuries, wars and conflict may have divided the Baltic nations, but trade has been a great unifier as the Hanseatic ports brought wealth and knowledge to these shores.

### All-Inclusive experiences

- Immerse yourself in the grandeur of the Russian Tsars over two days in St. Petersburg
- Experience the elegance and beauty of the medieval city of Tallinn in Estonia
- Boasting more than 1,000 years of history, uncover Gdansk's interesting past

## 11 Day Cruise Amsterdam > Copenhagen



 Cruise  Cruise start/finish  Late departure  Overnight stay



Tallinn, Estonia

**Day 1: Wednesday 10 June 2020**

### Amsterdam, Netherlands

Welcome to Amsterdam where your journey into wonder begins with a warm greeting by the crew as you step on board Scenic Eclipse. Raise your glass this evening and toast the start of your luxurious cruise.

**Meals: D**

**Day 2: Thursday 11 June 2020**

### Kiel Canal, Germany

Dating back to 1895 this 98 kilometre long canal links the North Sea with the Baltic Sea and is spanned by seven high-level bridges. Enjoy an afternoon of scenic cruising through the backyards and gardens of the locals who call this region home.

**Meals: B.L.D**

**Day 3: Friday 12 June 2020**

### Bornholm & Christiansø Islands

Set sail for the easternmost point of Denmark and discover the unique islands of Bornholm and Christiansø.

Discover Bornholm and the pretty town of Svaneke. **Freechoice:** Visit Christiansø Island and see the fortress of King Christian V or explore the bird sanctuary at Græsholmen.

**Meals: B.L.D**

**Day 4: Saturday 13 June 2020**

### Gdansk

Centuries of maritime heritage has shaped Gdansk into a charming destination. It is also the birthplace of the Solidarity movement led by Nobel Laureate Lech Walesa.

**Freechoice:** Discover the historic centre dating back to the 16th and 17th centuries on a walking tour or explore the World Heritage-listed Teutonic Order Castle of Malbork. Alternatively, visit Stuthof Concentration Camp or take a panoramic tour of the Tricities of Gdansk, Sopot and Gdynia.

**Discovery:** Choose a Scenic Discovery bicycle tour.

**Meals: B.L.D**

**Day 5: Sunday 14 June 2020**

### Klaipeda

Lithuania's only port, Klaipeda will fascinate and delight.

**Freechoice:** Discover the small and charming city of Klaipeda or explore the World Heritage-listed Curonian Spit ecosystems.

**Meals: B.L.D**

**Day 6: Monday 15 June 2020**

### Tallinn

You'll be surprised by Estonia's small capital with its medieval walls and picturesque Old Town.

**Freechoice:** Take a walking tour of the historic centre with its picturesque churches and medieval streets or take a panoramic tour. Alternatively, explore the Estonian Maritime

Museum with over 200 items on display including a century old icebreaker, the remains of the oldest ship in Estonia, a submarine and more.

**Meals: B.L.D**

**Day 7: Tuesday 16 June 2020**

### St. Petersburg

The sheer grandeur of this former Imperial Capital will amaze and delight. On a panoramic tour see fabulous palaces and cathedrals. Take advantage of an overnight stay to see this magnificent city by day and by night at your leisure.

**Enrich**

**Witness a private music and dance performance.**

**Meals: B.L.D**

**Day 8: Wednesday 17 June 2020**

### St. Petersburg

**Freechoice:** Be seduced by Peterhof's Upper and Lower Gardens or visit the magnificent Hermitage Museum.

Alternatively, explore St. Isaac's Cathedral or take a leisurely cruise along the canals admiring the grandeur and beauty of this magnificent city.

**Meals: B.L.D**

**Day 9: Thursday 18 June 2020**

### Helsinki

The trendy Finnish capital, blends stunning natural surrounds with contemporary design.

**Freechoice:** Explore the Seurasaari open-air museum showcasing Finnish wooden architecture or tour this interesting city and visit the Temppeliaukio Church carved out of the natural bedrock. Alternatively, visit Suomenlinna island and enter the World Heritage-listed fortress.

**Discovery:** Take a Scenic Discovery bicycle excursion.

**Meals: B.L.D**

**Day 10: Friday 19 June 2020**

### At Sea

Relax on board and take advantage of the expansive array of facilities and dining experiences.

**Meals: B.L.D**

**Day 11: Saturday 20 June 2020**

### Copenhagen

Your cruise ends this morning as you farewell the crew and disembark, taking away memories of a truly unforgettable experience.

**Meals: B.L.D**

*Itinerary subject to change.*

### Key

**Meals: Breakfast (B), Lunch (L), Dinner (D)**

# Truly All-Inclusive

## ...luxury, without exception

We want you to enjoy the experience of a lifetime as we reveal the many wonders of the world's magnificent oceans and waterways from the elegant surrounds of our fleet of luxury Scenic Eclipse Discovery Yachts.

### On board

- Spacious all-verandah suite accommodation
- Personal service with an almost 1:1 guest-to-staff ratio
- Butler service for every guest
- All-inclusive dining and beverages
- Spa Sanctuary, gym, yoga and pilates studio
- Indoor and outdoor swimming and plunge pools
- Expert Discovery Leaders on all cruises
- Daily entertainment and education program
- Complimentary Wi-Fi
- Return airport transfers

### Onshore

- Comprehensive choice of all-inclusive shore excursions
- Active discovery excursions
- Exclusive Scenic Enrich experiences
- Scenic Freechoice activities
- Expert Discovery Team and local guides

RECEIVE  
\$500pp OFF  
WHEN YOU  
PAY IN FULL<sup>^</sup>

PLUS  
\$150 USD  
ON BOARD  
CREDIT<sup>+</sup>

All tipping and gratuities on board and onshore

### Cruise Pricing

Category	Suite	Deck	pp/twin share
DD	Grand Deluxe	5	\$14,245 pp
C	Verandah	6	\$14,495 pp
CA	Deluxe Verandah	6	\$14,745 pp
CD	Grand Deluxe	6	\$15,245 pp
GP	Grand Panorama	6	\$39,295 pp
B	Verandah	7	\$17,995 pp
BA	Deluxe Verandah	7	\$18,295 pp

Category	Suite	Deck	pp/twin share
BD	Grand Deluxe	7	\$16,245 pp
A	Verandah	8	\$16,495 pp
AA	Deluxe Verandah	8	\$16,745 pp
AD	Grand Deluxe	8	\$17,245 pp
S	Spa	8	\$20,495 pp
P	Panorama	8	\$32,495 pp
SA	Spa	9	\$20,995 pp

Category	Suite	Deck	pp/twin share
SB	Spa	9	\$21,495 pp
OP	Owner's Penthouse	9	\$39,995 pp
OT	2-bedroom Penthouse	9	\$61,500 pp

### PAYMENTS

**Deposit of 10% of the cruise fare** (required within 7 days of booking)  
**Payment of 15% of the cruise fare** (if confirming an Earlybird price)

**Final balance due no later than 130 days prior to departure**

All prices are AUD per person (pp) twin share. Subject to availability. Tour Code: 301E100620

**TERMS AND CONDITIONS:** These terms and conditions are additional to the full terms and conditions contained in the 2019/2020 Arctic, Fjords & The Baltics Voyages brochure. All bookings are subject to Scenic full terms and conditions. **The Contract:** 1.1 The contract between Scenic Pty Limited ("Scenic", "We", "Us" or "Our") and You includes: these Terms and Conditions; and Your Itinerary. 1.2 It is important that You carefully read the Contract as You will be bound by it once You have signed these Terms and Conditions or otherwise paid the earlier of Your Booking Deposit or the Cruise Price. **Cruise Tour Price:** All Prices are AUD Per Person Twin Share subject to availability and includes taxes and charges. Cruise price is subject to availability at time of booking. Single supplement price on application. Port charges and taxes are included in the above prices. **^Early Payment Discount:** An Early payment discount of \$500 per person is available for guests if they book and pay in FULL no later than 31 January 2019. Guests can only have 1 early payment discount per booking. **Airfare:** Airfares from Australia are not currently available and will be subject to confirmation once airlines advise 2020 airfares. **Return transfers:** Subject to a minimum number of passengers and location. Please enquire for more details. **+On board credit:** \$150 per person is in USD and subject to minimum numbers. Please enquire for details. **Booking Payments, Deposits:** A non-refundable deposit of 10% of the value of the cruise fare is required within 7 days of booking. If taking advantage of an Earlybird Fare a second deposit of 15% of the value of the cruise fare is required 12 months prior to departure. Please refer to your booking advice for details. Except as required by law or in accordance with the Deposit Protection Plan, Booking Deposits are not refundable and are not transferable to other Tours or Bookings. Please enquire for details. **Deposit Protection Plan:** Please enquire about our Deposit Protection Plan from \$250 per person. **Final Payment:** You must pay the balance of the Tour Price to Us no later than 130 days before the Tour Departure Date. If Your booking is made 130 days or less before the Cruise Departure Date, You must immediately pay the Cruise Price in full when You book. All Cruise Prices are quoted in Australian dollars. **Amendment Fees:** A \$50 administration fee is payable for each variation to your booking. **Cancellation Fee:** Please refer to the main Scenic Eclipse 2019/2020 brochure for cancellation information. **Travel Documents:** Passengers must have a valid passport (with 6mths validity from return date) and a valid return air ticket. Persons with a prior record of any criminal offence may require a visa and are solely responsible in obtaining this documentation. Please enquire with your Travel Agent for all information regarding your required documents. **What's included in the Cruise Tour Price?** Where indicated in Your Itinerary, Your Cruise Price includes, cruise travel; services of a Cruise Director; airport transfers outside Australia; specified meals; internal flights; accommodation; sightseeing and admissions where stated; GST (where applicable); port charges; and all gratuities and tipping on land tours operated by Us. **What's not included in the Cruise Tour Price?** Unless expressly listed in Your Itinerary, costs will not be included in the Cruise Price. In particular, the following costs are not included in the Cruise Price: all helicopter, submarine and scuba diving experiences, additional optional activities; accommodation upgrades; meals not specified in Your Itinerary; passport fees; visas; vaccinations; government taxes and charges (excluding GST); and items of a personal nature. **Tour and Cruise Maps:** Maps or tour depictions contained in this flyer are intended as an indication only and should not be relied upon as the actual route taken during the Tour. **Pictures, Images and Information:** All images in Tour Brochures represent typical scenes and descriptive detail for each tour, however it is possible that the particular subject matter may not be seen or experienced on Tour. Also, some pictures may have been digitally enhanced. **Itinerary:** Subject to change. **Brochure Printed:** 5/12/18



**Sorrento Key Travel & Cruise Centre**

Unit 4 Carine Quarter 473 Beach Road, DUNCRAIG WA 6023

Call 1300 552 741

email: [admin@sorrentokeytravel.com.au](mailto:admin@sorrentokeytravel.com.au)

web: [www.sorrentokeytravel.com.au](http://www.sorrentokeytravel.com.au)

